

TC5X Wrist Mount Installation Guide



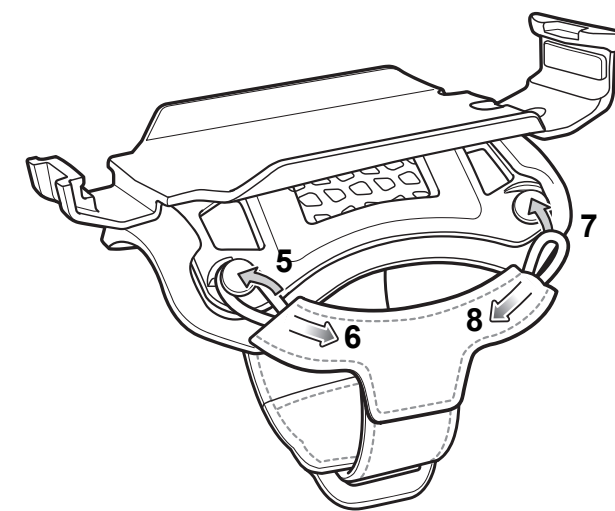
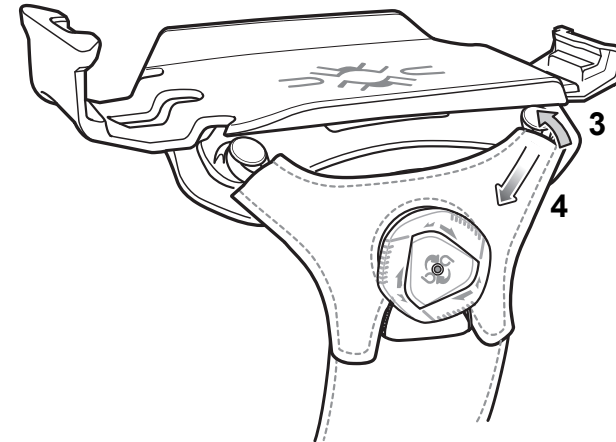
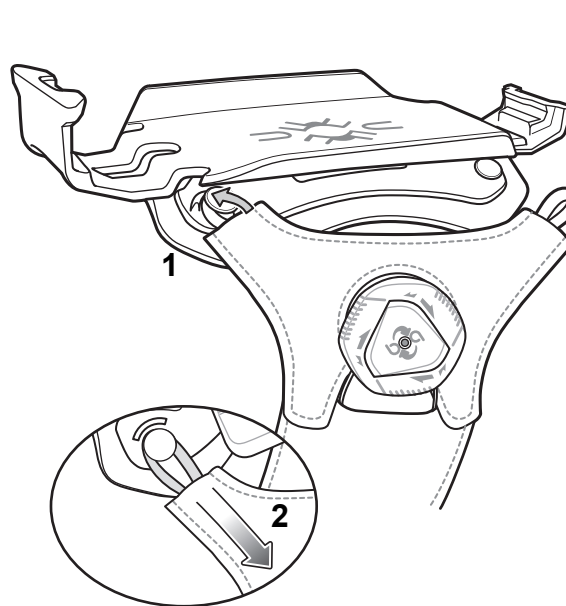
Installation



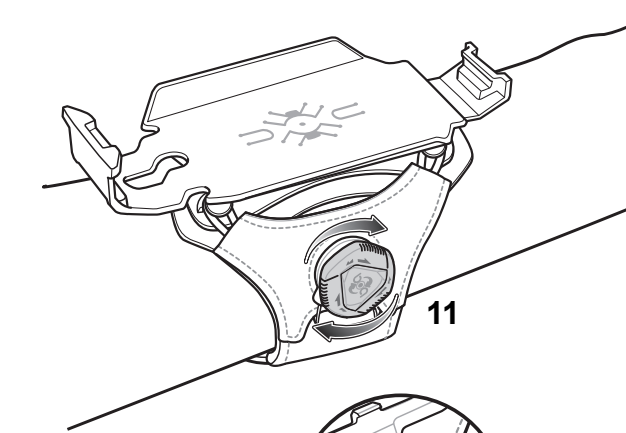
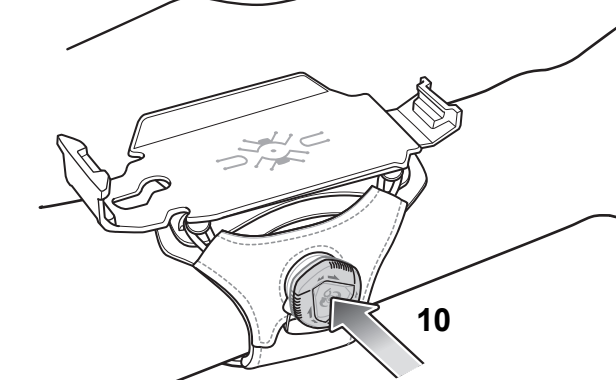
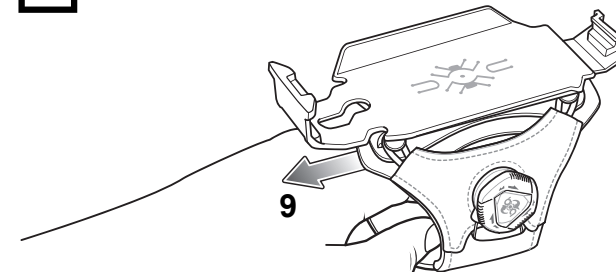
MN-003326-01EN Rev. A - 7/20

Zebra Technologies | 3 Overlook Point | Lincolnshire, IL 60069 USA
www.zebra.com

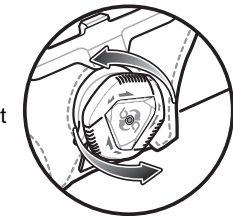
ZEBRA and the stylized Zebra head are trademarks of Zebra Technologies Corporation, registered in many jurisdictions worldwide. All other trademarks are the property of their respective owners. © 2020 Zebra Technologies Corporation and/or its affiliates. All rights reserved.



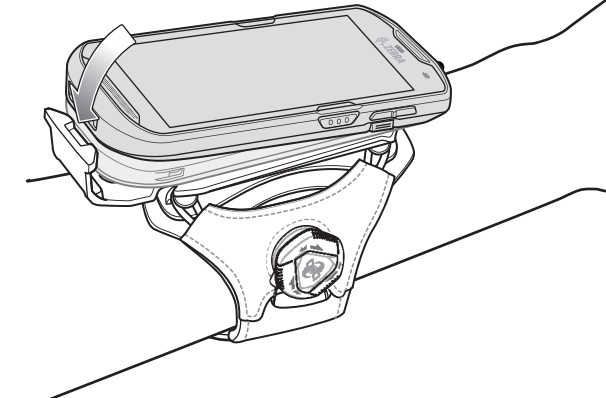
NOTE: Expand strap if required.
See Removal, steps 3 and 4.



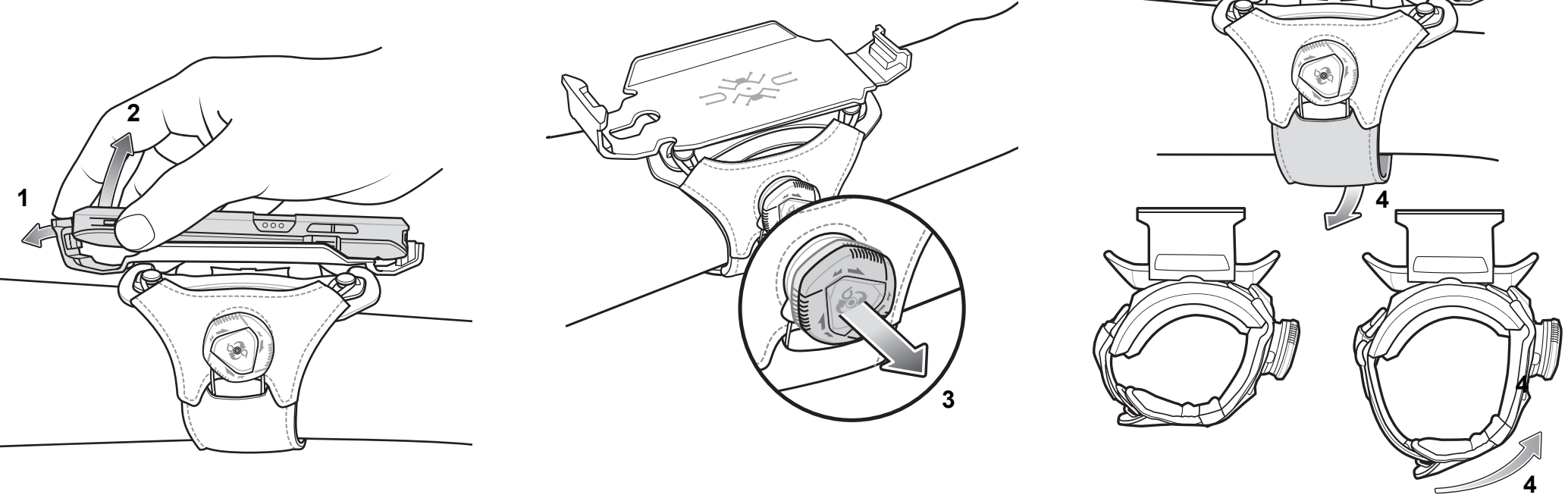
Adjust for Comfort
To remove see
Removal on page 2.



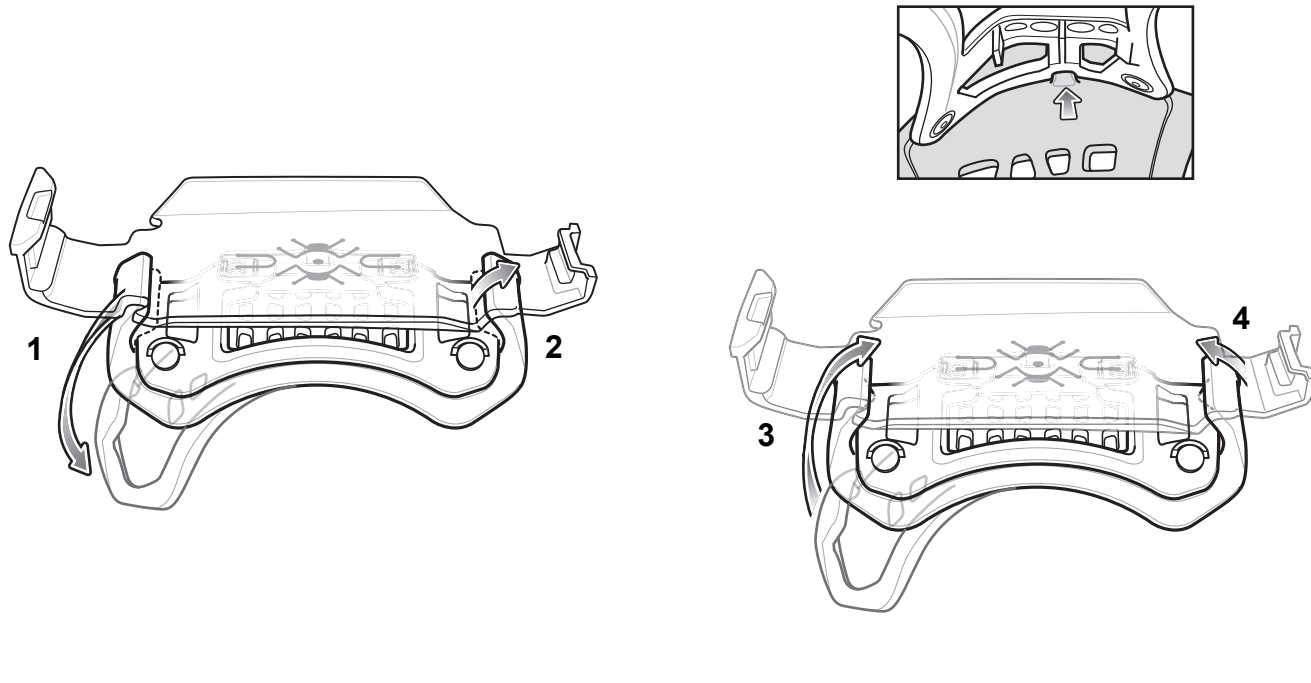
NOTE: Use with or without Rugged Boot.



Removal



Comfort Pad Replacement



Cleaning

See the TC5X User Guide for cleaning instructions.

Warranty

For the complete hardware product warranty statement, go to: www.zebra.com/warranty.

Service Information

If you have a problem using the equipment, contact your facility's Technical or Systems Support. If there is a problem with the equipment, they will contact the Customer Support at: www.zebra.com/support.

For the latest version of this guide go to: www.zebra.com/support.