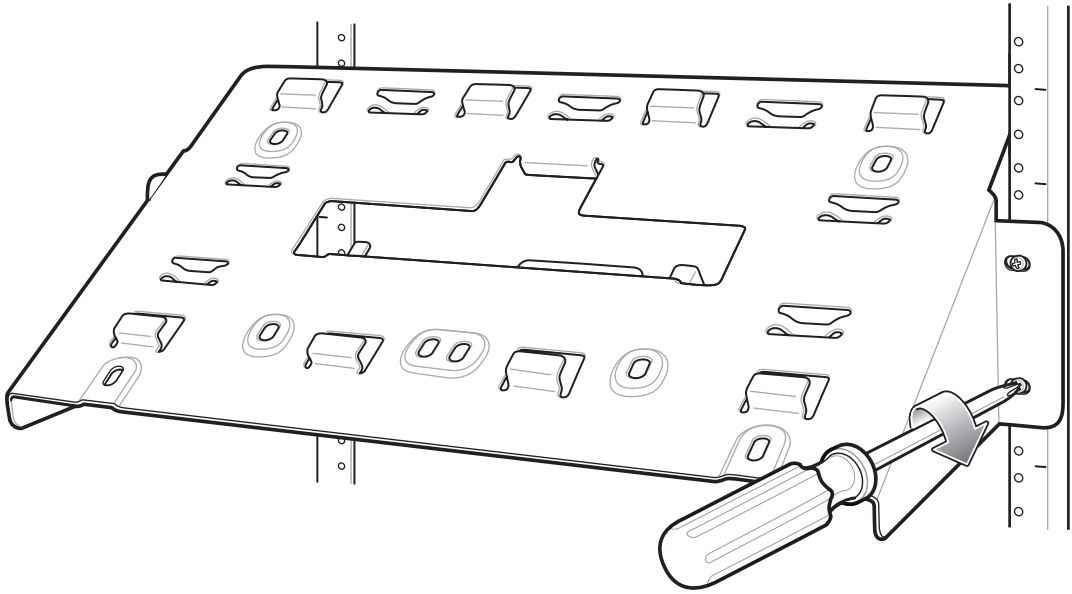
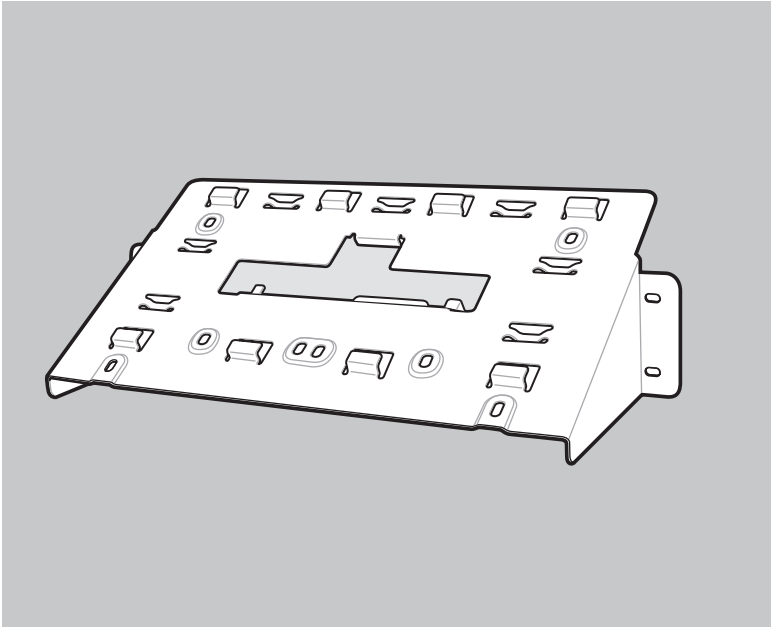
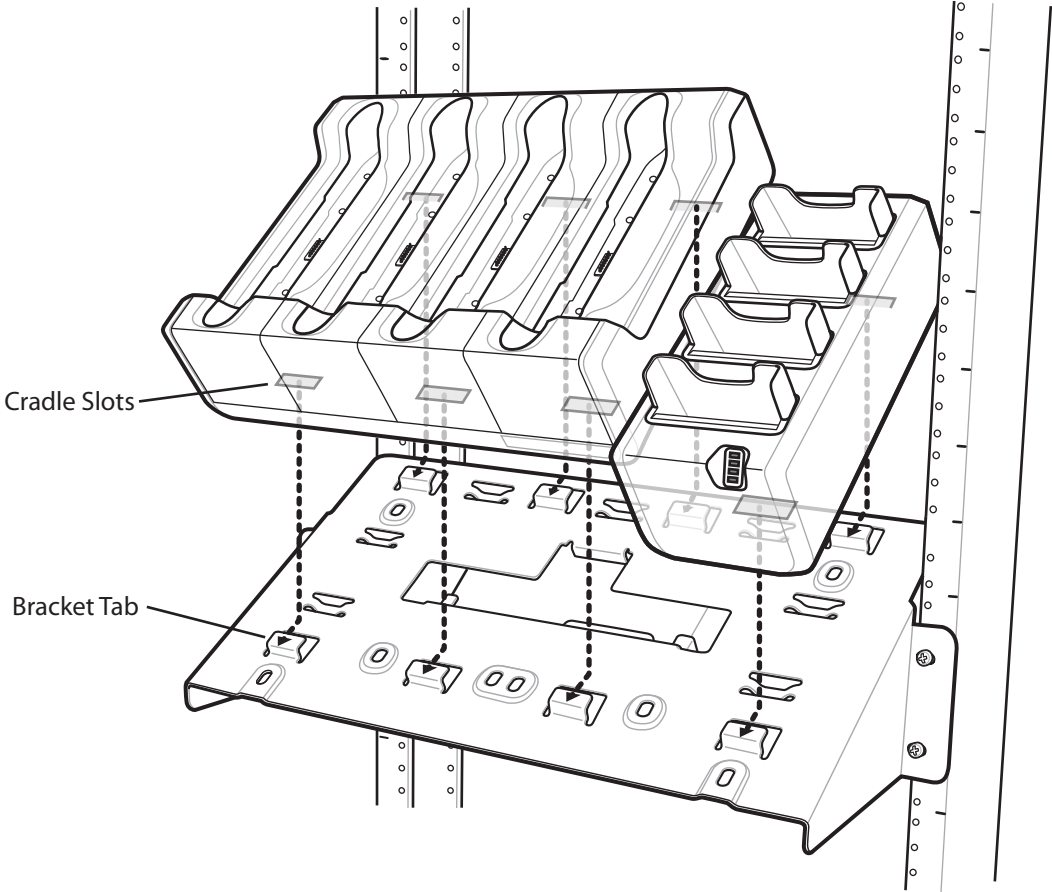


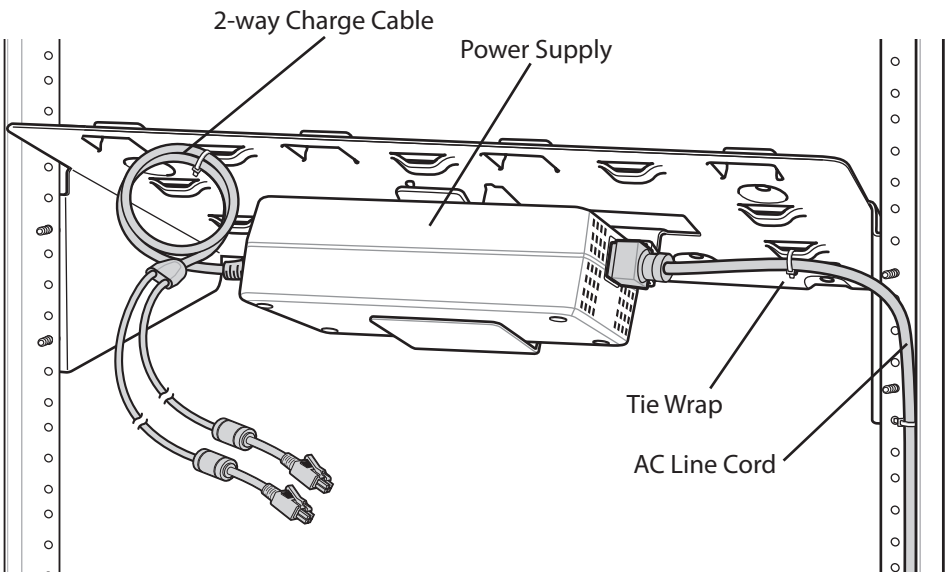
MOUNTING BRACKET INSTALLATION GUIDE



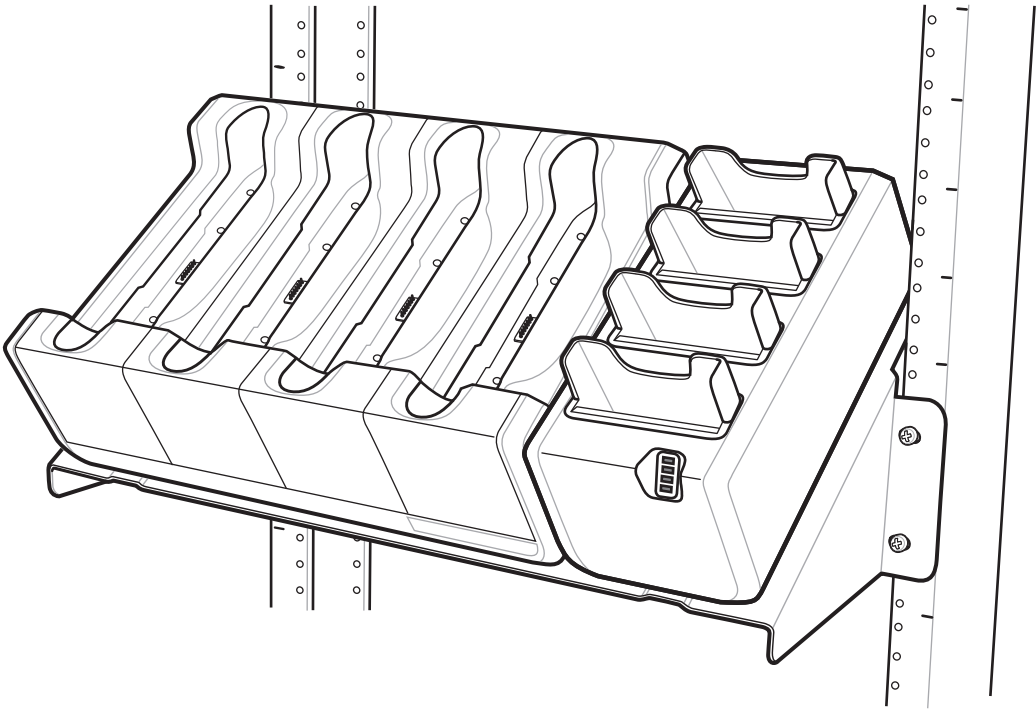
1. Align mounting holes on the bracket with screw holes on the rack.
2. Secure the bracket to the rack using rack screws.



7. Align the slots on the bottom of the Four-slot Charge Only Cradle and the Four-slot Battery Charger with the tabs on the bracket.



3. Place the power supply into the holder on the back of the bracket.
4. Plug the AC Line Cord into the power supply.
5. Plug the 2-way DC cable into the power supply.
6. Use tie wraps to secure the cables to the bracket.



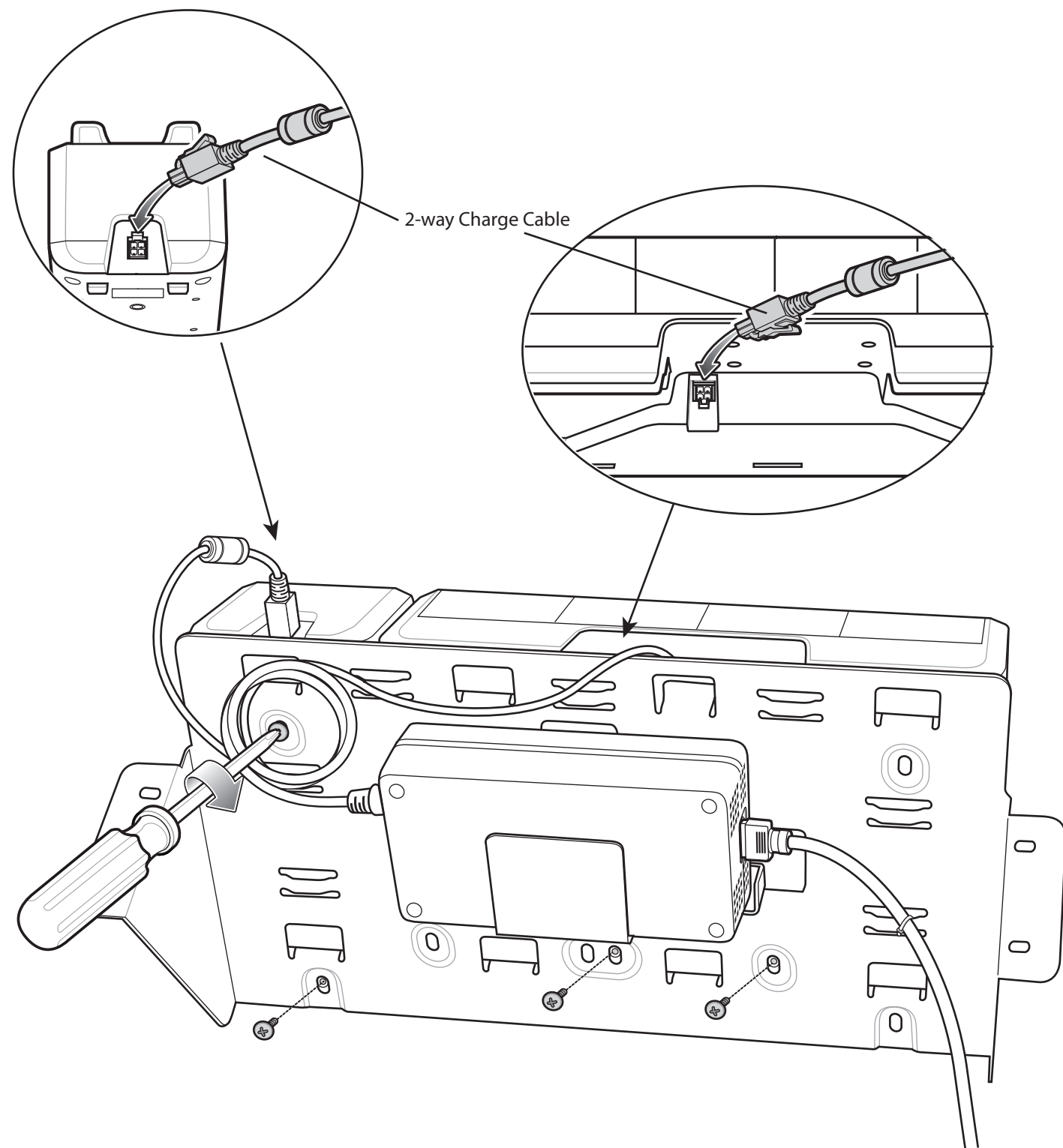
8. Slide the the cradle and the charger down onto the tabs.



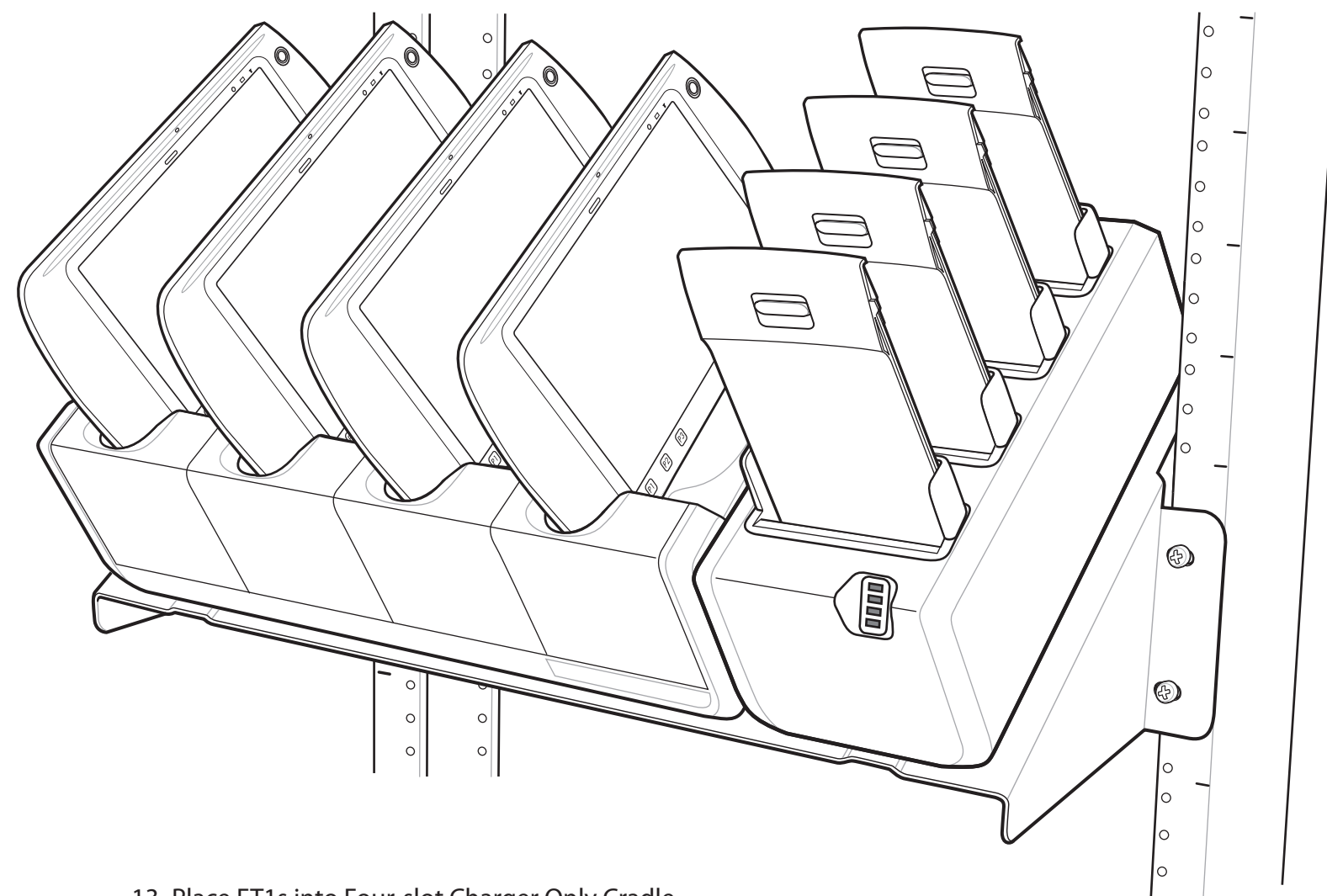
Zebra Technologies Corporation
Lincolnshire, IL U.S.A.
<http://www.zebra.com>

Zebra and the Zebra head graphic are registered trademarks of ZIH Corp.
The Symbol logo is a registered trademark of Symbol Technologies, Inc.,
a Zebra Technologies company. © 2015 Symbol Technologies, Inc.





9. Secure the Four-slot Battery Charger to the bracket using two screws.
10. Secure the Four-slot Charge Only Cradle to the bracket using two screws.
11. Plug the 2-way Charge Cable power connectors to the power input ports on the Four-slot Charge Only Cradle and the Four-slot Battery Charger.
12. Plug AC Line cord into appropriate power source.



13. Place ET1s into Four-slot Charge Only Cradle.
14. Place batteries into the Four-slot battery Charger.