

# ET40/45 Payment Sled for Ingenico Link/2500i

## User Guide



MN-004609-01EN Rev. A — October 4, 2022

Zebra Technologies | 3 Overlook Point | Lincolnshire, IL 60069 USA  
www.zebra.com | ip.zebra.com

ZEBRA and the stylized Zebra head are trademarks of Zebra Technologies Corp., registered in many jurisdictions worldwide. All other trademarks are the property of their respective owners. © 2022 Zebra Technologies Corp. and/or its affiliates. All rights reserved.

### Installation



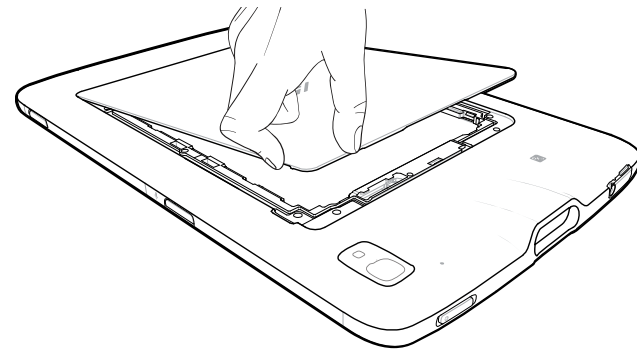
**CAUTION:** Power off the ET4X before installing or removing the Payment Sled.



**CAUTION:** Do not use any tool for battery cover removal. Puncturing the battery or seal may cause a hazardous condition and a potential risk of injury.

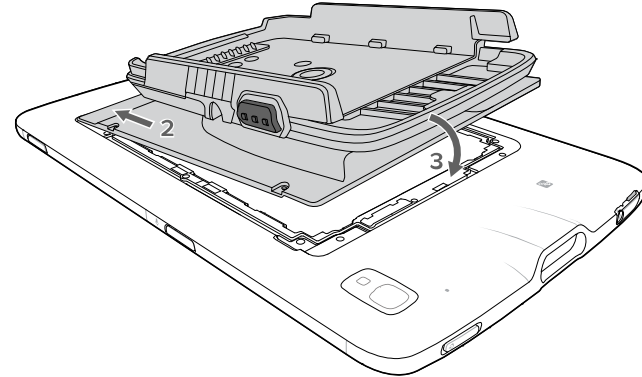
**1**

Remove the battery cover and store in a safe place.



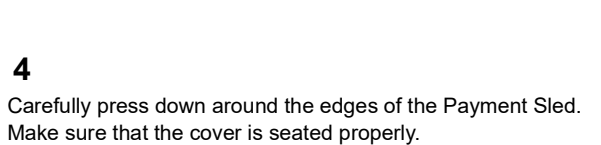
**2**

Insert the tabbed end of the Payment Sled into the battery well. Ensure that the tabs on the Payment Sled are aligned with the slots in the battery well.



**3**

Rotate the Payment Sled down into the battery well.

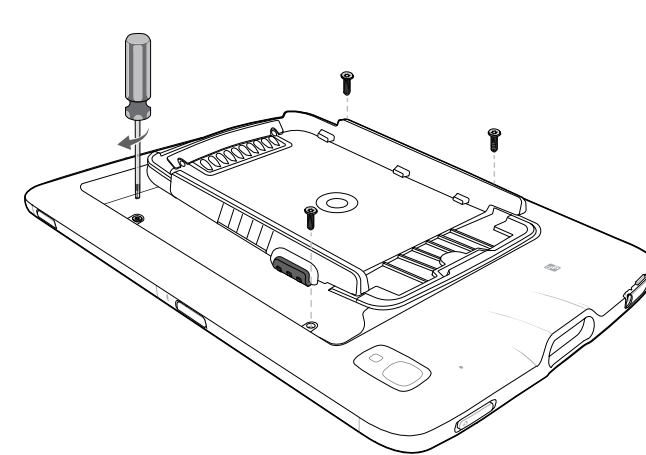


**4**

Carefully press down around the edges of the Payment Sled. Make sure that the cover is seated properly.

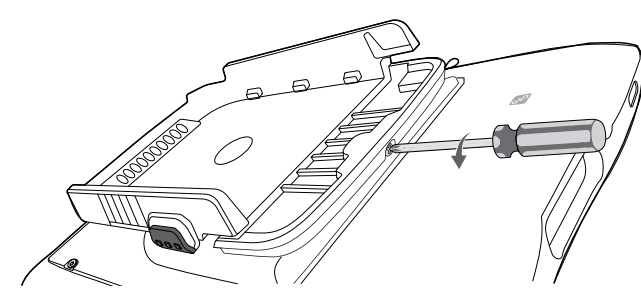
**5**

Using a T5 Torx screwdriver, secure the Payment Sled to the device using four M2 screws.



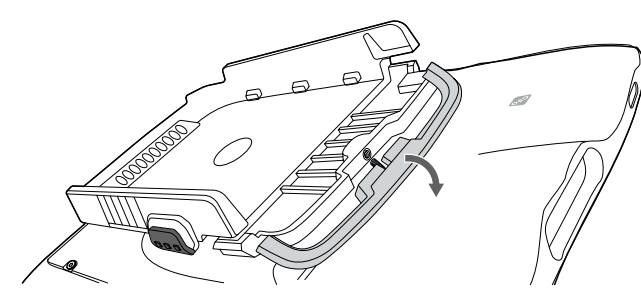
**6**

Loosen the security screw.



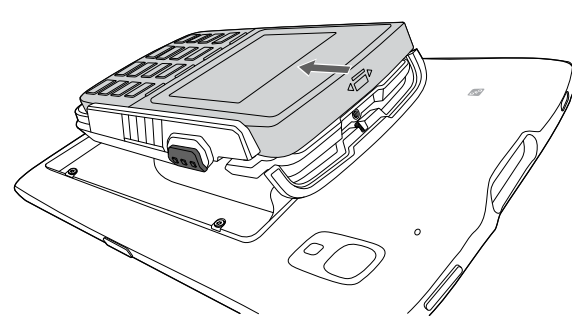
**7**

Lower the top clip.



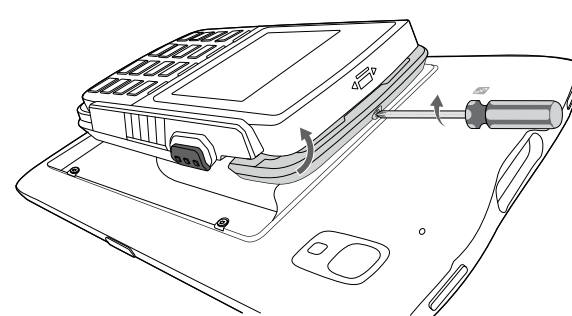
**8**

Insert the payment device.



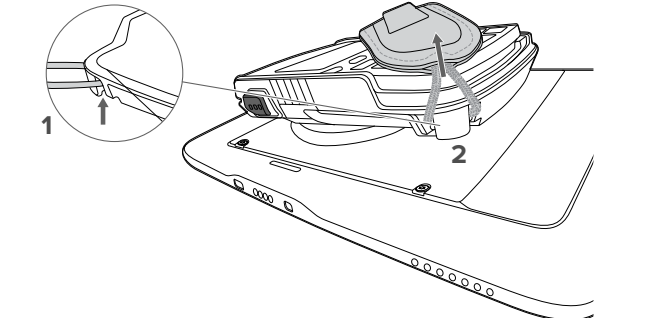
**9**

Lift the top clip and tighten the security screw. Torque to 14 n-cm.

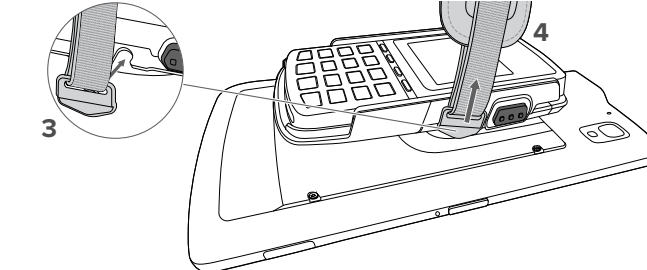


**Install the Hand Strap**

Attach the hand strap cord to the corner of the payment device (1) and pull up on the hand strap to secure it (2).



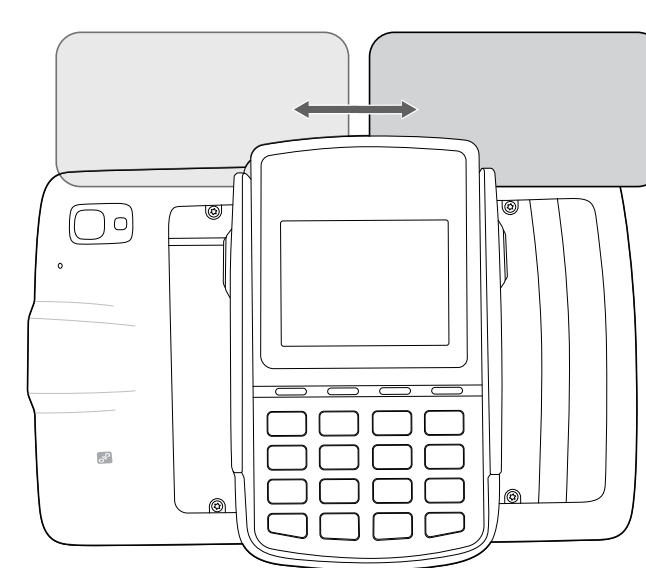
Insert the hand strap clip into the notch (3) and pull up on the hand strap to secure it (4).



Place your hand between the device and the hand strap and adjust the hand strap as necessary.

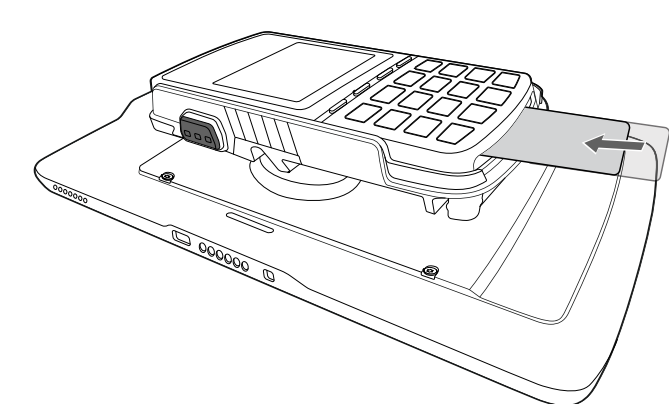
**Swipe Card**

Swipe a card in either direction with the magnetic stripe facing the tablet.



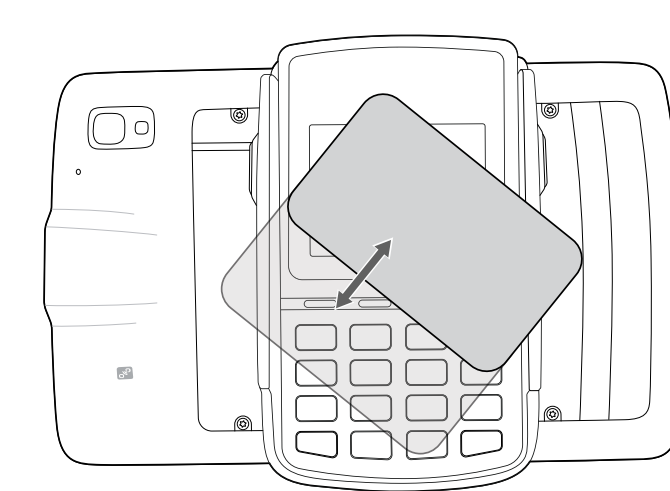
**Insert Card**

Insert a card with the chip facing away from the tablet.



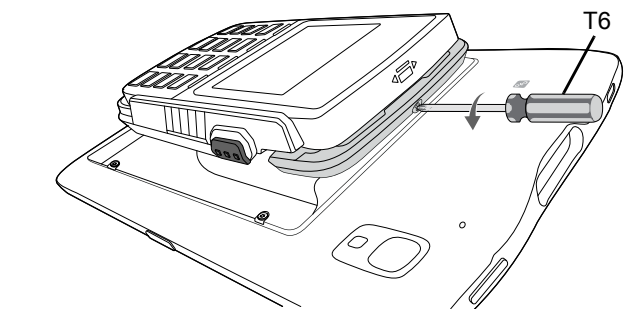
**Tap Card**

Tap a card to the Payment Sled.

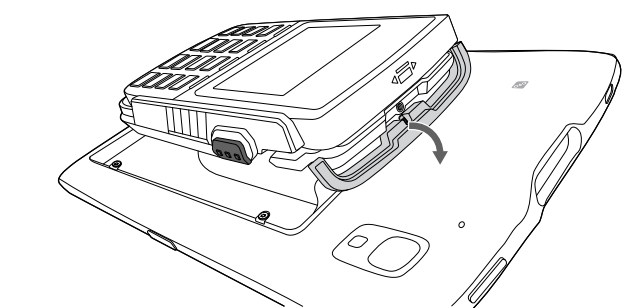


**Remove Payment Device**

**1**  
Loosen the security screw.



**2**  
Lower the top clip.



**3**  
Slide the payment device out of the Payment Sled.

