



ET4X

VESA Mount Installation Guide



MN-004597-03EN Rev. A — 12/2022

Zebra Technologies | 3 Overlook Point |
Lincolnshire, IL 60069 USA
zebra.com | ip.zebra.com

ZEBRA and the stylized Zebra head are trademarks of Zebra Technologies Corp., registered in many jurisdictions worldwide. All other trademarks are the property of their respective owners. © 2022 Zebra Technologies Corp. and/or its affiliates. All rights reserved.

1



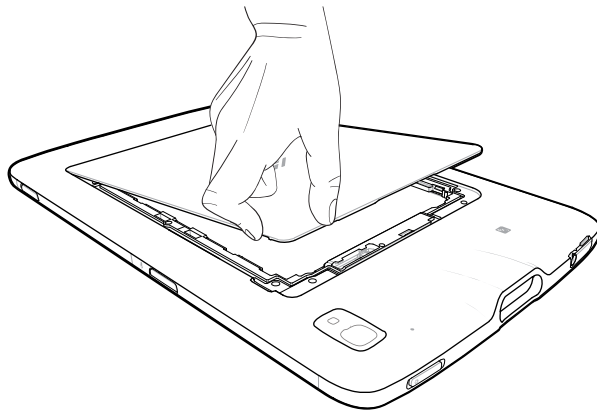
CAUTION: Power off the ET4X before installing or removing the VESA Mount.

2



CAUTION: Do not use any tool for battery cover removal. Puncturing the battery or seal may cause a hazardous condition and a potential risk of injury.

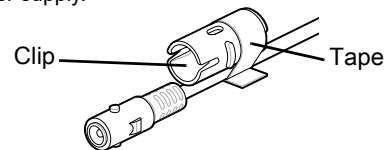
Remove the battery cover and store it in safe place.



3

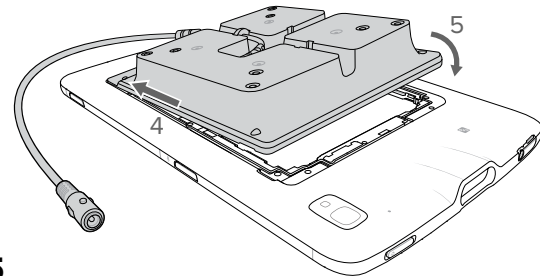
If using a Zebra DC line cord (CBL-DC-388A2-01, not included) and power supply (PWRBGA12V50W0WW), remove and discard the tape securing the clip to the connector.

If using a 3rd party power supply, remove and discard tape, and keep clip in a secure place for possible future use with a Zebra DC line cord and power supply.



4

Insert the tabbed end of the VESA mount into the battery well. Ensure that the tabs on the VESA mount are aligned with the slots in the battery well.



5

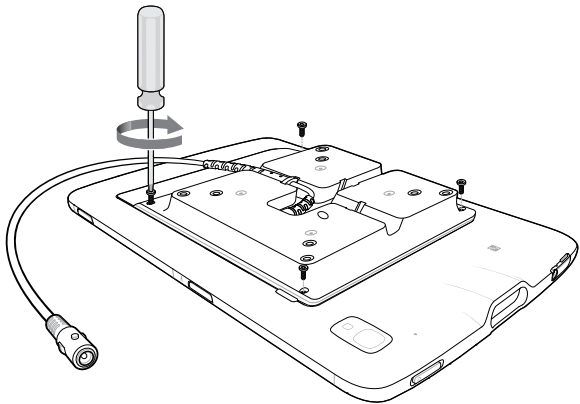
Rotate the VESA mount down into the battery well.

6

Carefully press down around the edges of the VESA mount. Make sure that the cover is seated properly.

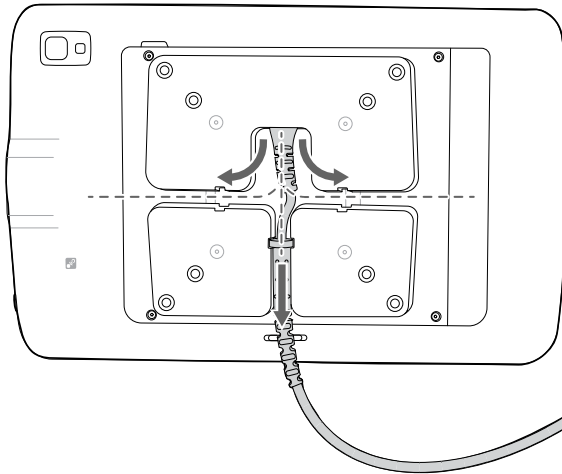
7

Using a T5 Torx screwdriver, secure the VESA mount to the device using four M2 screws.



8

Determine the desired mounting orientation and reroute the power cable as required. The VESA mount supports portrait and landscape mounting and provides three cable routing slots.

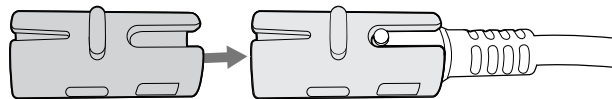


9

Mount the device using the included M4 screws. The ET4X VESA mount supports 75 mm or 100 mm mounting patterns.

10

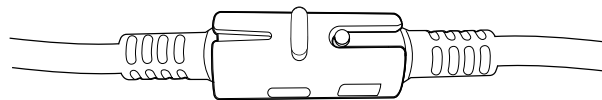
If using a Zebra DC line cord and power supply, attach the provided cable clip to the VESA mount power cable connector.



Do not attach the clip if using a third party power supply.

11

Plug the DC line cord connector to the VESA mount cable connector and clip.



If using a third party power supply, secure the cable connectors using cable ties or tape.