

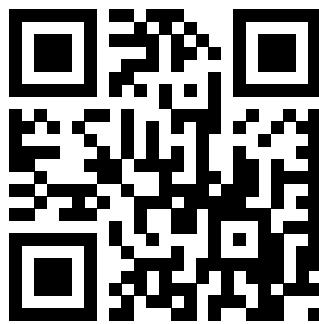
ZD611T
Desktop Printer



Quick Start Guide

1 Setup

IMPORTANT
Go to zebra.com/setup
and install the driver for your printer.



zebra.com/setup

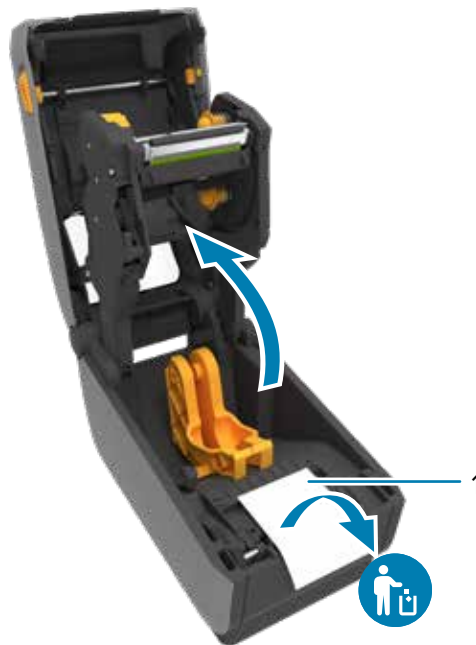


The driver **MUST** be installed before connecting the printer to the computer, or it will cause complications. If your Microsoft Windows-based computer does not have the driver installed for this printer, download it from zebra.com/setup and install it before continuing.

2 Remove Packing

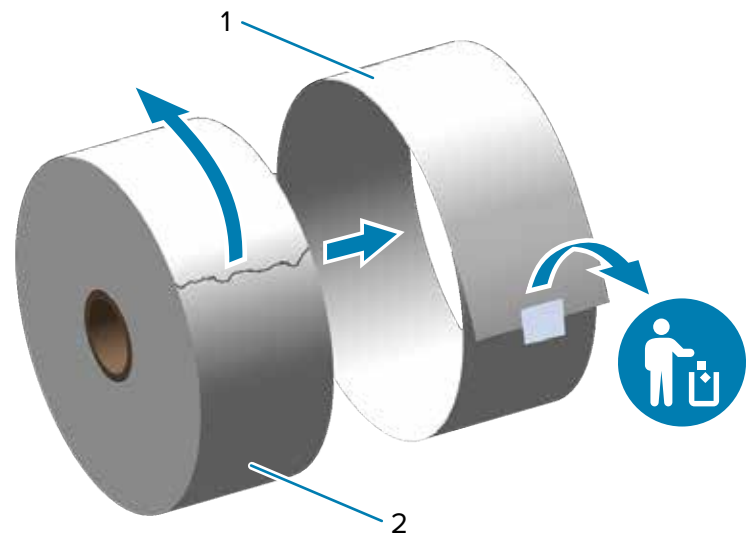


Slide the release latches (1) to the front to unlock the cover.



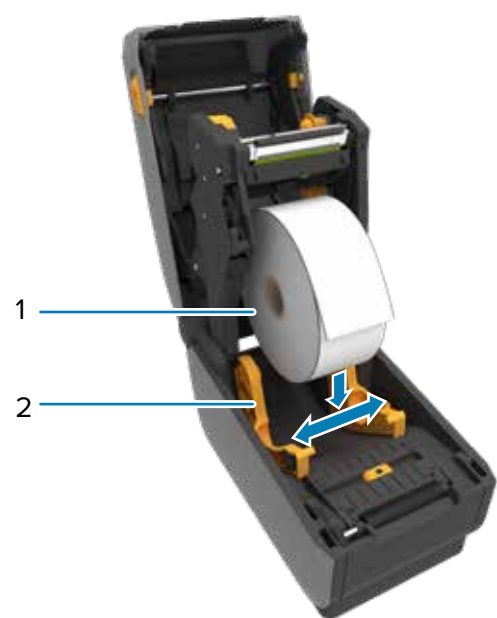
Open the printer and remove the packing (1).

3 Load Media



Unroll and discard the outer layer (1) of the media roll (2).

3 Load Media (continued)



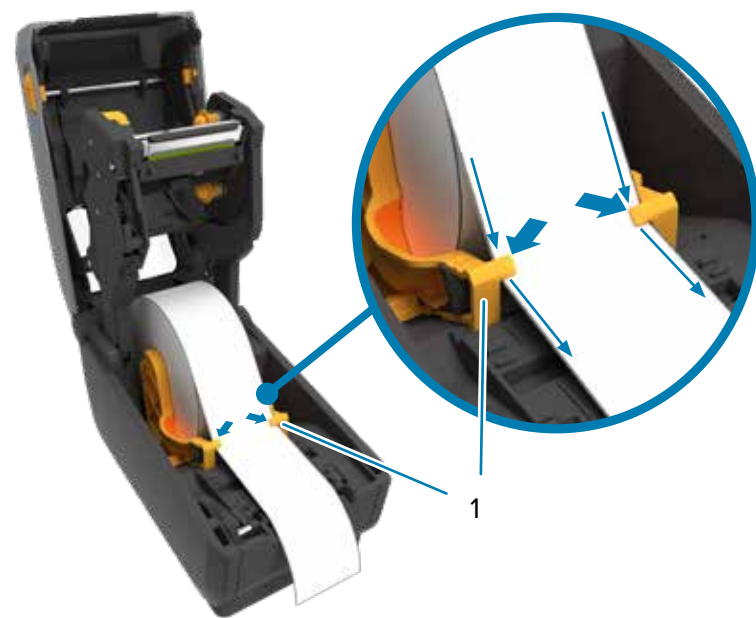
Spread the roll holders (2) open and place the roll (1) into the printer.



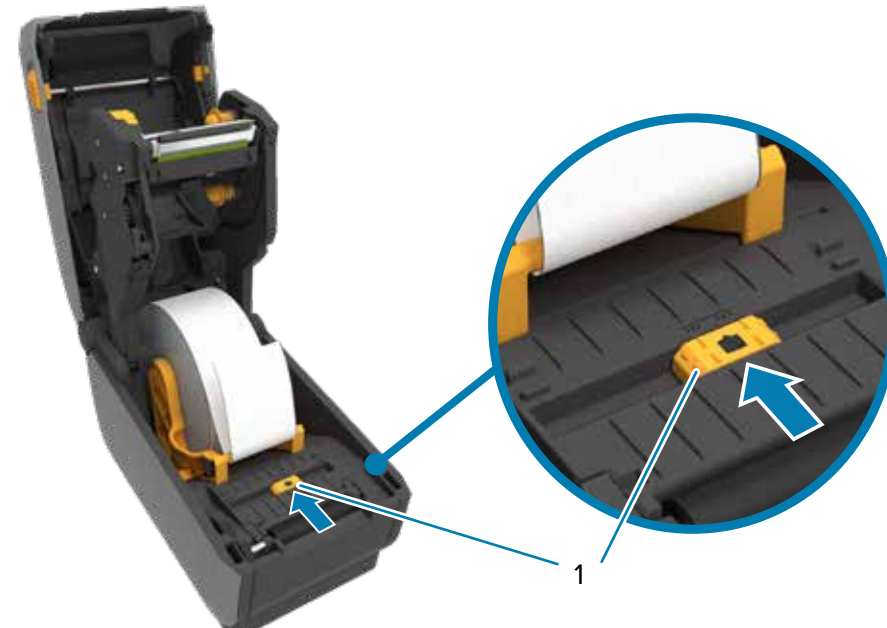
Verify the roll spins easily on the holder.



Pull the end of the roll past the front edge of the printer.

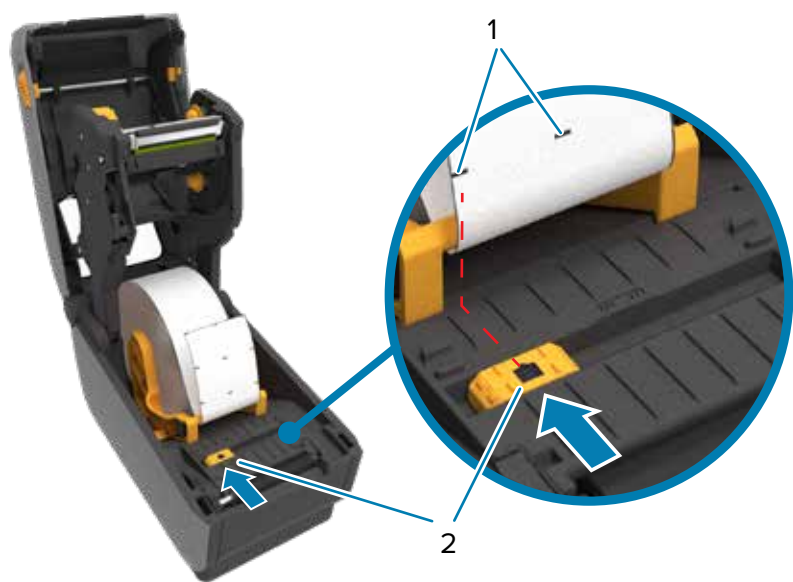


Press the media under the guides (1).



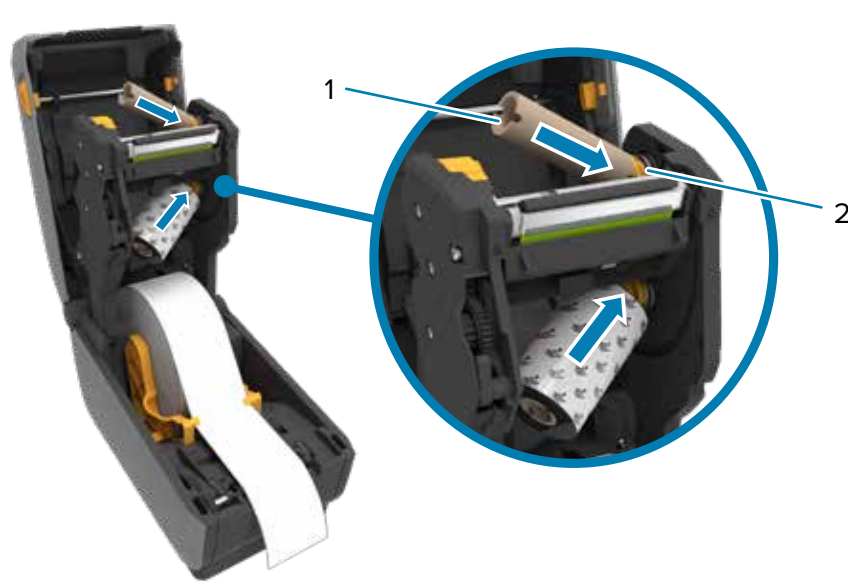
Align the sensor (1) to the center of the roll for regular labels and receipts.

5 Adjust Sensor (continued)

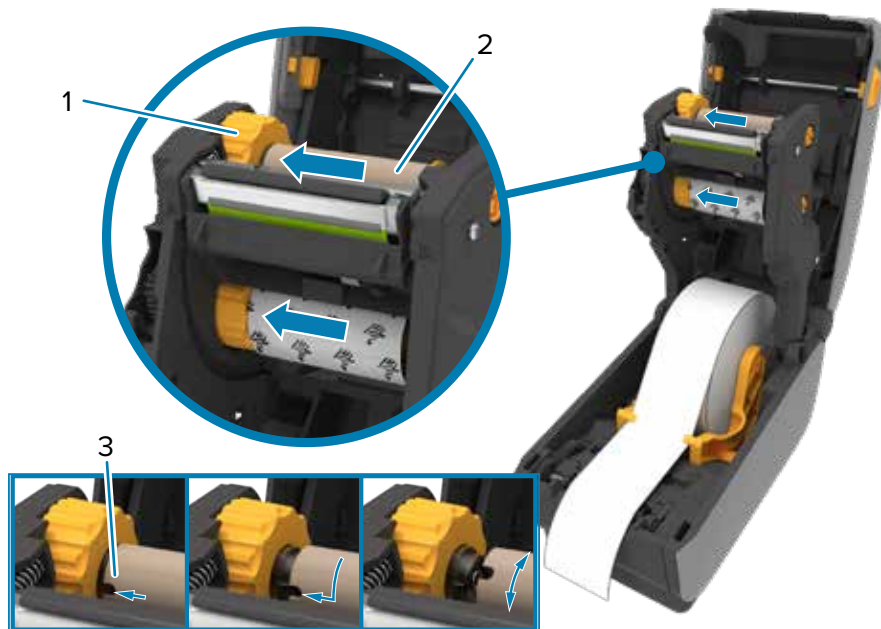


Align the sensor (2) to marks (1) away from the center of the roll for marked labels.

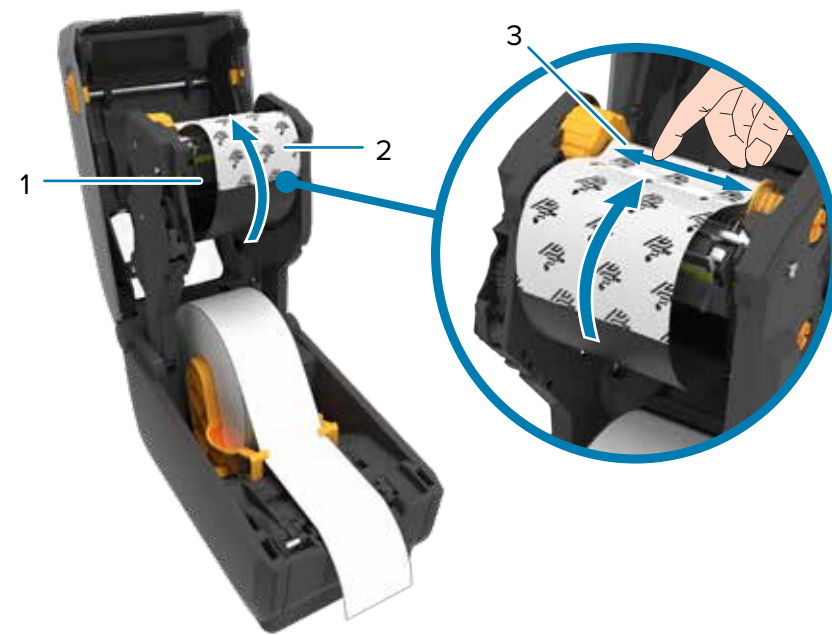
4 Load Ribbon



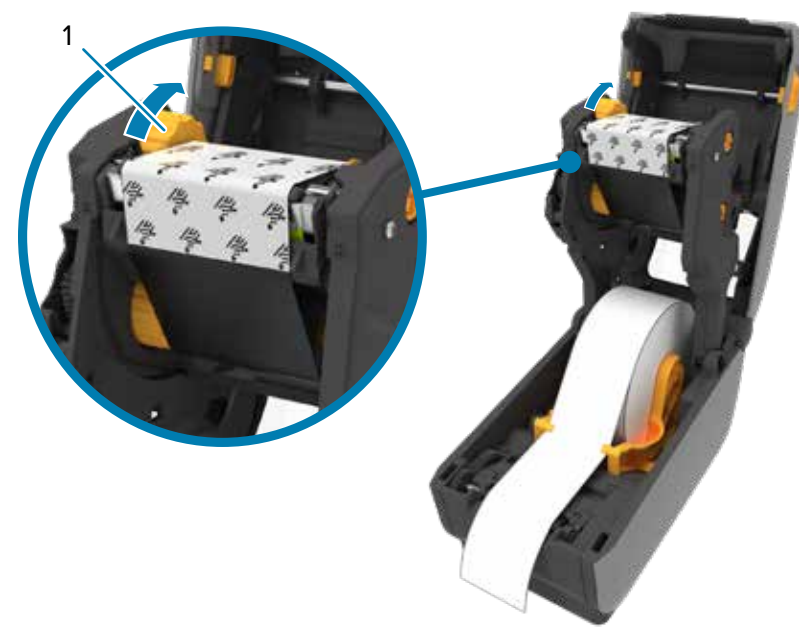
Push the right side of the spool (1) onto the spring-loaded spindle (2).



Place the left side of the spool (2) on the spindle (1) aligning it with the notches (3).



Pull the supply ribbon leader (2) up and over the printhead (1) and attach it to the take-up spool (3).



Turn the ribbon take-up wheel (1) to remove the slack and advance the ribbon.

6 Close Printer



Push down on the front edge of the printer until it locks.

7 Connect Power

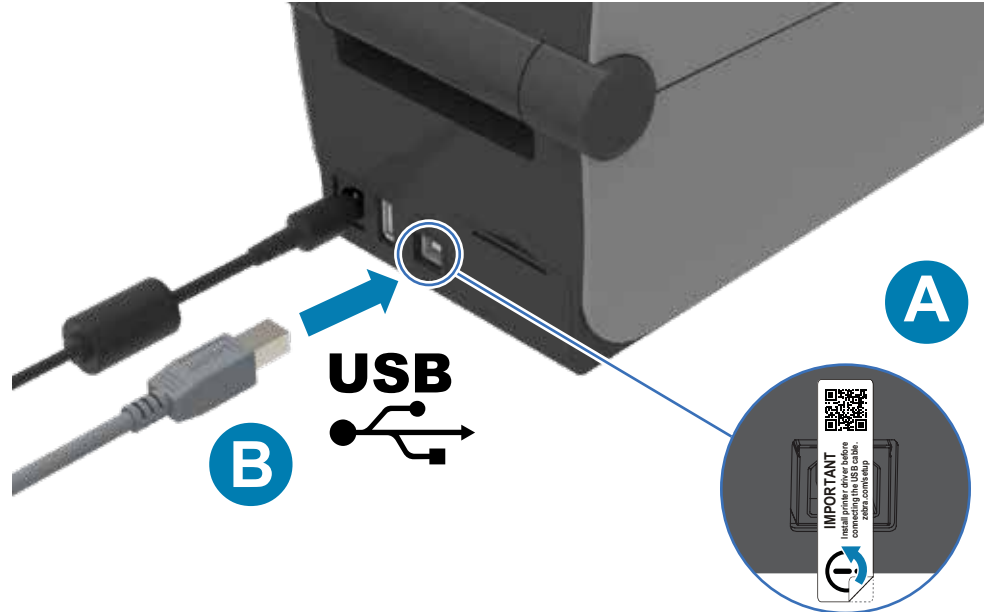


A. Plug the power supply into the printer.
B. Plug the power cable into the power supply.



C. Plug the power cord into an appropriate receptacle.
D. The power supply lights green.

8 Connect USB



A. Remove the port blocker label.
B. Connect the USB cable to the printer and your computer.

9 Power On



Press the power button (1).

9 Power On (continued)



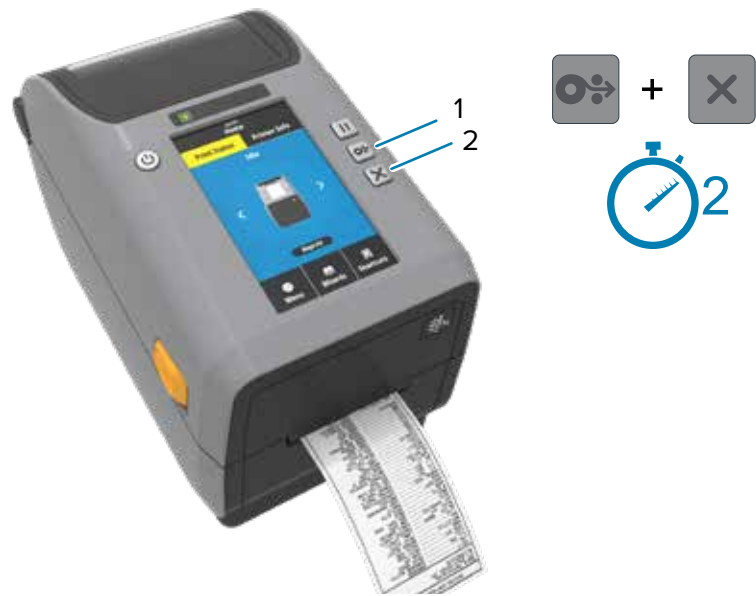
When the the printer is ready, the printer status light (1) will turn green.

10 Smart Calibration



Press and hold the Pause (1) and Cancel (2) buttons for two seconds to line up the labels.

11 Print Configuration Report

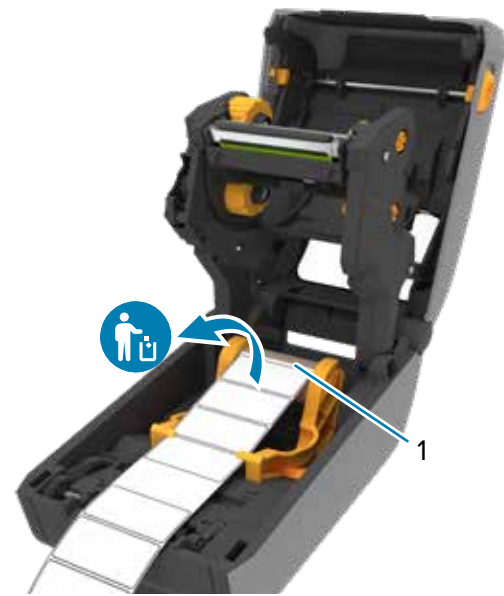


Press and hold the Feed (1) and Cancel (2) buttons for two seconds to print a configuration report.

i Media Out



When the media runs out, the printer and media status lights (1) will turn red.



Open the printer and discard the empty roll (1).

i Support and Information

View user documentation and how-to videos.
zebra.com/zd6111-info

View Quick Answers and Knowledge Base.
zebra.com/knowledge

Need to design a label?
zebra.com/zebradesigner

Join Community Connection of Zebra users and ambassadors.
zebra.com/supportcommunity

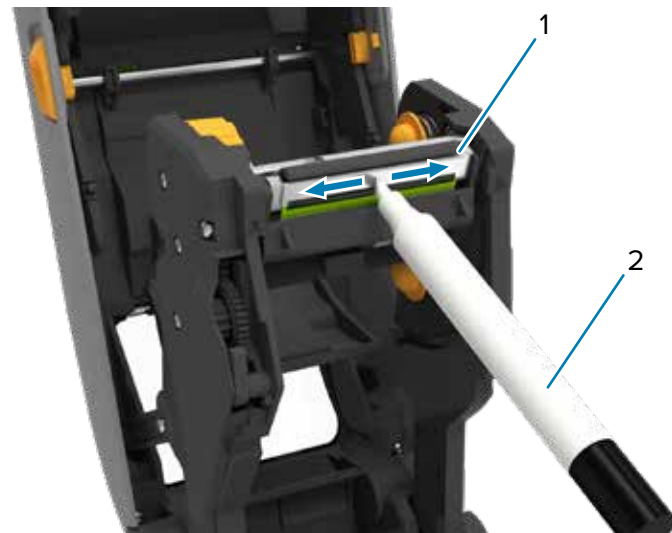
Learn about genuine Zebra supplies.
zebra.com/supplies

Contact Zebra about your printer.
zebra.com/contact

Need to manage your printer?
zebra.com/ppme

Need to secure your printer?
zebra.com/printsecure

i Cleaning

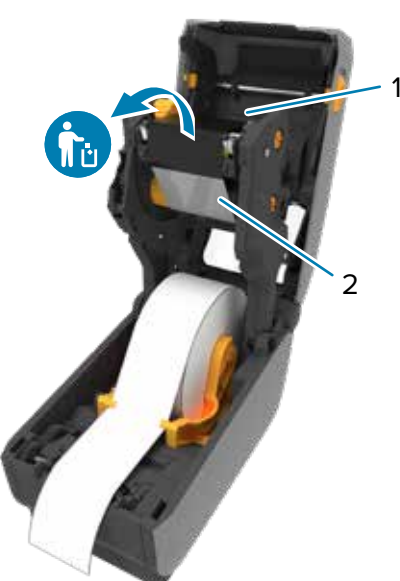


Clean printhead (1) with a cleaning pen (2). Clean from the middle to the outside. The cleaning pen is only for cleaning a printhead.

i Ribbon Out



When the ribbon runs out, the printer status and a flashing media status lights (1) will turn red.



Open the printer and discard the used ribbon. Keep the empty supply spool (2) to use for the next the ribbon take-up (1).

